

• Campus. • Connection

Mount Saint Vincent University

January 9, 1989

AAU calls for increase in university funding

The Association of Atlantic Universities (AAU) is calling for an 11.1 per cent increase in base funding for Maritime universities for 1989-90. In its December brief to the Maritime Provinces Higher Education Commission (MPHEC), the AAU said that the recommended increase would enable the universities to maintain current levels of operation and provide for the recovery of a portion of the funding shortfall the institutions have experienced over the past decade.

The AAU stressed that provincial funding levels for universities in the region cannot continue to fall behind those in the rest of Canada, if a first-class system of post-secondary education is to be maintained. Without adequate resources, the AAU said, "Maritime universities are in jeopardy of becoming second rate."

"The Mount strongly supports the call for a significant increase in base funding," said Mount president, Dr. Naomi Hersom. "This amount will barely enable us to maintain the level of services to our students -- there's very little allowance for needed initiatives."

According to the AAU brief, total full-time student enrolment at Maritime universities has increased by 38 per cent over the past 10 years. Yet, after adjusting for inflation, government funding per student has actually decreased by more than 20 per cent for the same period.

"This has placed a severe strain on our physical facilities and equipment," said Dr. Hersom, "and the other universities in the region all face the same problems."

The MPHEC funding formula is expected to be announced by early spring.

Final report for Mount's 1988 United Way Campaign



The results of the Mount's 1988 United Way Campaign have been tallied, and Lois Dyer Mann, vice-president (administration)

and chair of this year's United Way Committee, notes, "The results have been very rewarding."

Dyer Mann reports that 106 employees, and many students, gave almost \$12,000. The per donor giving rate has almost doubled since 1986, which she credits to the enthusiasm and work of the entire committee and the innovative Quirky Quatrathalon launch for the campus campaign. She also thanks Chef Rene for hosting the launch lunch, and all who helped make the campaign a success.

New administrative structure now in place

President Hersom met with administrators and managerial support staff recently to present the new administrative structure which has been implemented on a trial basis, effective this month.

"This is long overdue," Dr. Hersom said, "but it has been under consideration for some time now and we have received suggestions from members of the various groups."

The organizational chart was developed by the President's Advisory Committee (PAC) to outline spheres of responsibility and reporting structures.

One of the most significant aspects of the new structure is the abandonment of what had been known as the Managerial Support group. "Most of the 20 MS

members are now considered members of the administrative group. We saw no need for the separate designation," explains Dr. Hersom. "Having just one administrative group makes it easier to ensure that our personnel principles and practices are consistent."

The new organizational structure consists of directors and four administrative groups. Levels within the AG designation depend upon the relative size of a department, reporting lines, budget and supervisory responsibilities.

Copies of the new administrative organizational charts are available for reference from the chairs of the academic departments, and from the vice-president administration.

OF INTEREST OF INTEREST OF INTER

Enter the 15th Annual Art, Craft, Baking, Hobby and Talent Show at the Mount art gallery, Feb. 9-19. Faculty, staff, administrators, students and alumnae can submit up to five items, Jan. 24 to Feb. 3. Also featured will be a special display of memorabilia from the Class of '39.

• • •

The Camp Hill Medical Centre's Palliative Care Service for Long Term Care is offering a series of inservices for health care professionals and those with a special interest in health care for the elderly. Topics, which cover key issues relevant to long-term care, will be repeated in a series of one-hour lectures held Mondays and Fridays until April 17. For more information contact Joan Carling, special projects nurse, at 420-2050.

• • •

The Canadian Science Writers' Association (CSWA) invites entries for the 1988 Science Journalism Awards. Fifteen, \$1000 awards

will be offered for science and technology journalism in the categories of newspapers, magazines, radio, television, and special publications, with a \$500 Junior Award. Competitors must be Canadian citizens, but need not be members of the CSWA. Entry forms are available from the public relations office, Evaristus 205, and must be returned to the CSWA by Jan. 27. For more information call the public relations office at ext. 132.

• • •

The Society for Teaching and Learning in Higher Education (STLHE) and the Committee for the Improvement of Teaching and Learning (CITL) is sponsoring the Ninth Annual Conference on Teaching and Learning in Higher Education, June 17-20 at the University of Alberta, Edmonton. Proposals are invited for presentations in the following suggested topics: evaluating teaching, innovative approaches to education, learning

continued on page 3

OF INTEREST continued from page 2
in higher education, specific teaching techniques, teaching assistance for new instructors, teaching communications skills, and technology in teaching and learning. The deadline is Feb. 10. For more information, and a registration package, contact STLHE, c/o CITL, 1-11 University Hall, University of Alberta, Edmonton, Alberta, T6G 2J9, tel. (403) 432-2826 before, or (403) 492-2826 after, Jan. 28.

• • •

Each year, Revenue Canada, Taxation co-operates with community volunteers to assist disadvantaged people in completing their tax returns. Revenue Canada offers a short training course to teach volunteers how to complete straightforward tax returns. If you can spare some time between January and April and are interested in signing up, call Leslie Theriault at the Halifax taxation office, 426-7934.



President Hersom recently presented long-service awards to the following staff: (back row, left to right) Joan Beairst, secretary, co-operative education (5-year service pin); Bill Morris, technician, print shop (10-year service pin); Jacquie Stevens, executive secretary to vice-president administration (10-year service pin); Glenn Hollett, security officer (5-year service pin); Joanne Burns-Theriault, recreation officer (5-year service pin); (front row, left to right) Dorothy West, secretary to the president (received a photography to mark 20 years' service); Yvette Dupere, library assistant (10-year service pin); Agnes Wainman, Seton receptionist (10-year service pin); Mona Hennigar, housekeeper (10-year service pin); and Annette Newton, secretary, university relations (10-year service pin)

Home Ec course incorporates community outreach

Dr. Rita Schneider, home economics faculty, provided 27 of her students with a unique opportunity last semester. As a component of her interpersonal relationships course, each student initiated a relationship with an older adult (most of whom were seniors) at the Rockingham Community Centre. They shared six visits over the term, and the students maintained logs which documented how the relationships were progressing.

"Interpersonal relationships are exceedingly important to these students. Most of them are in bachelor programs in home economics and education, and will be working with people, within a community," explains Dr. Schneider. The primary aim of the outreach project was to develop students' communications skills, and while the community component was a plus, Dr. Schneider makes it clear that the relationship between students and seniors was a two-way street.

Most of the students discovered that their senior partners, all of whom were active and independent and had volunteered for the project, had a lot to offer. Bonnie Smith, a third-year foods and nutrition major, says of her partner, "She's helped me with problems, and offered me good advice." Similarly, fourth-year student Joanne Simons notes that her partner "has had the benefit of life experience. She has taught me how important it is to live life to the fullest."

Dr. Schneider says that in addition to

developing communications skills, students have gained valuable insight into the interests and living conditions of seniors who represent an increasingly large segment of the population. "I wanted them to discover how active many seniors are, how involved they are in the world around them, and how caring they are. Many, for example, do a lot of volunteer work. Also, I wanted students to be aware of the kinds of places seniors live, and why they live there."

On the subject of vitality, Joanne Simons concurs that her partner "was a ball of fun. Sometimes she has more energy than I have."

Now that the course is over, many of the students, including Bonnie Smith and Joanne Simons, are continuing their friendships. "I'm delighted about this," comments Dr. Schneider, who says the program was "a total success according to the feedback from students, seniors and the community centre."

She adds that many of the same students will be in the human relationships follow-up course this term. "The interpersonal relationships course taught them how to form relationships. Now we'll be moving on to helping skills, which they'll ultimately use in the community work they'll be doing after they graduate." Dr. Schneider notes that a different community group will be chosen for this term's project.

Athletics/recreation office offers back care program

The athletics/recreation office is offering a back care program designed to prevent and relieve lower back pain. Fitness co-ordinator Lisa Boudreau comments, "A good back care program works on strengthening, stretching and relaxing the muscles that contribute to the pain. That's the kind of program that we'll be offering."

Boudreau adds that some past participants have reported that they've "never felt better" than while on the program.

The program will be held Tuesdays and Thursdays from 12:15-1:15 p.m. for six weeks beginning Jan. 10. For more information call Lisa Boudreau at ext. 445.

First Nigerian Staff Development Fellow at the Mount

The Mount and Nigeria may be many miles apart, but Dr. Femi Taiwo is helping to link the two through the common thread of women's studies. Dr. Taiwo, a professor of philosophy at Nigeria's Obafemi Awolowo University, Ile-Ife, is the first of several Nigerian Staff Development Fellows coming to the Mount under the Canadian-Nigerian Linkage Program in Women's Studies.

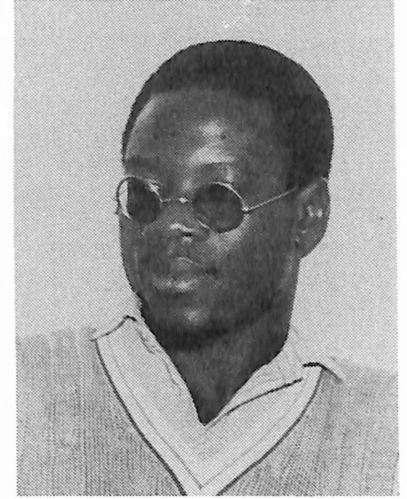
For four months he is observing the Mount's women's studies program and researching North American feminist political theory as part of a study of women and politics. Dr. Taiwo explains that while the participating universities of Obafemi Awolowo and Ibadan offer courses that incorporate feminist content, they wish to establish full-fledged women's studies programs in the near future.

Establishing these programs is the main aim of the Canadian-Nigerian Linkage Program, a joint venture of the Mount's Institute for the Study of Women and Dalhousie University's Centre for African Studies, funded by a four-year grant from the Canadian International Development Agency (CIDA).

Dr. Taiwo is a member of a Nigerian feminist political organization called Women in Nigeria (WIN) whose members are as likely to be men as women. "Very few Nigerian women actually call themselves 'feminists' because the term often implies being separate from men," he says.

Inequalities facing Nigerian women include a tax system that favors married men over married women. "Even if both partners work, only men are entitled to child deductions or dependency allowance," says Dr. Taiwo, adding that the National Council of Women's Societies (NCWS) and the WIN are working to reduce these inequalities. He points to child marriages as another example of women's oppression. "Female unemployment is also much higher, and far fewer women are educated."

Most perplexing, he notes, is that



"Every political party has been well-represented quantitatively by women in my country, but the women rarely become ministers or rise to other political offices, for example, as political party leaders. I hope that my research will help to explain why women's political involvement hasn't been translated into real power."

His current research, and the five years he spent studying and living in Toronto, have provided him with insight into feminist issues in North America, too. "The constitutional provisions (for equal rights) are in place here. Yet, disabling social structures don't permit women to be truly equal." North American women, he observes, still shoulder the brunt of child care and housework. "While they are permitted to run for public office, where could most of them ever find the time?"

Dr. Deborah Poff, associate director of the Mount's Institute for the Study of Women and Mount director of the Canadian-Nigerian Linkage Program, says that as a result of the Dr. Taiwo's input, and the linkage program in general, "our women's studies program is less ethnocentric. We are no longer talking only about white, middle-class feminism, but global feminism. We are getting an international perspective."

Report from November meeting of the Senate

At its Nov. 28 meeting, Senate extended its gratitude and best wishes to Dr. Mairi Macdonald on the occasion of her retirement as director of the Centre for Continuing Education.

The motion stated that she "has given dedicated and outstanding service to Mount Saint Vincent University as director of the Centre for Continuing Education which expanded widely under her directorship, addressing in particular the needs of women and non-traditional students."

Dr. Macdonald was a member of Senate since 1972.

Congratulations were extended to Mary Clancy on her recent election as Member of Parliament. Clancy is "a graduate, past-president of the alumnae association, and member of faculty, Charter

Committee, and Board of Governors, who will prove, in Steven Cameron's words, to be one of 'characters of the House.'"

Other motions from the Nov. 28 meeting included:

- . that a special ad hoc committee be struck to recommend to Senate on the possibility and advisability of moving to offer a four-year program;

- . that the title of the degree of Bachelor of Secretarial Arts be changed to Bachelor of Office Administration; and

- . that Senate approve as the official Mount Saint Vincent University ring, the design put forward by the ad hoc Student Ring Committee. (*Ed. note: watch for further details on the new ring design in a future issue of the Campus Connection.*)

Students: a reminder from the registrar's office

The registrar's office reminds students of the following dates:

- . Wednesday, Jan. 11 - last day to register for B courses

- . Tuesday, Jan. 17 - last withdrawal date from full unit courses without academic penalty; last day to indicate audit registration for B courses

- . Tuesday, Jan. 31 - last day to clear A courses INC

- . Wednesday, Feb. 1 - Caritas Day

- . Monday, Feb. 20 - Study Break begins

- . Monday, Feb. 27 - classes resume; last withdrawal date for B courses without academic penalty

- . Thursday, Mar. 23, 5 p.m. through

- . Monday, Mar. 27 - Easter weekend - no classes

- . Friday, Apr. 7 - classes end

- . Monday, Apr. 10 - exams begin, 9:15 a.m.

- . Wednesday, Apr. 19 - exams end, dining

hall closes

- . Thursday, Apr. 20 - residences close, 4:30 p.m.

- . Friday, May 12 - Convocation

If you're planning to graduate in May, fill out your Intention to Graduate form and return it to the Registrar's office by Feb. 1. Now is also the time to update your local mailing address, if necessary, with the registrar's office, Rosaria Centre.

Campus Connection is published weekly by the Public Relations Office, Mount Saint Vincent University, Halifax, Nova Scotia B3M 2J6. Copy should be submitted to Room 205, Evaristus Hall, by Monday noon one week before Monday of publication. Editor: Charmaine Gaudet, 443-4450, ext. 339.
