



ALL WELCOME.

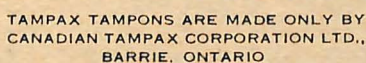
1

2

3

4

Our only interest is protecting you.



It would thus seem that the senate, in its procedure of decision on tenure, should make more of an effort to determine what the actual student voice in this regard is. Perhaps if the administration would exemplify this sort of genuine concern, the student body would be more willing to respond in a similar fashion.

RENT TO GO TO SIAC FUND

by Angie Turple

Student Union No Longer Required to Pay Rent to Administration.

Until very recently, the Student Union was required to rent offices space in Rosaria Hall. Since Rosaria Hall is commonly considered the Student Union Building of Mount Saint Vincent University (see the sign of the main driveway "Rosaria Hall, Student Union Building, Bookstore), it seems rather ridiculous for the Union to pay rent for offices in what is titled as its building.

Simply taking rumor and the sign into account may be quite misleading. Upon investigation however the Rosaria Hall issue becomes something quite different.

The grant to construct Rosaria Hall was awarded to Mount Saint Vincent in 1966. According to Mr. Burton, spokesman for the Mount University Grants Committee, the grant of \$1,097,000 was given to the Mount to build a "student centre and tunnel".

Under the University Grants Committee legislation loans of up to 90% of the amount needed to construct the building in question, based on the first estimate are available. The loan is granted to the University against certification of the institution and the architect and is paid to the university in 4 installments.

The building costs are valued, then an Order in Council is requested through the Minister of Education. Under the University Grants Act, loans are awarded by an Order in Council with the Provincial Cabinet keeping all control over grants and loans.

The Minister of Education goes to committee where the potential grant is discussed. Once the loan is approved an Order in Council is issued and the money is given to the University.

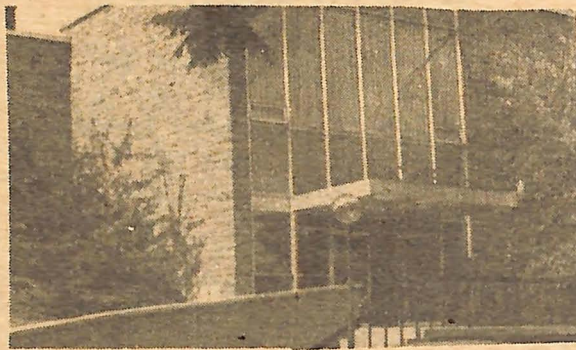
A mortgage is then taken out on the developing property, payable to the Provincial Government. Grants made to Universities are retired or written-off over a 20 year period, i.e. grants are self-liquidating loans. The interest rate on grants varies depending on the interest rate prevalent at the time (Rosaria Hall carries an interest rate of 6%).

According to Mr. Burton the university is required to state the purpose of the building. The university is free to use the building for whatever purpose it wishes. The usual procedure is to inform the Minister of Education (and therefore the University Grants Committee) of any change in the proposed purpose of the building.

With this background in mind the question still arises; "Why should the Student Union and therefore the students of the Mount pay rent for office space in their own student building"?

One reason put forth by Mr. Burton is that the students made no contribution to the funding of the building. He cited the example of the controversy over the building of the Dal SUB. The students of Dalhousie felt they had financed the building when the University and the Provincial government put up the money. He felt that if the Union had not contributed to the funding of the building, they had a weak case for complaint.

Margaret During, President of the Student Union was interviewed concerning the offices and rent involved.



Rosaria Hall

Until this year (1972-73) the Student Union rented one office for the Union and 1 for the Picaro. Presently it rents five rooms which house eight office and working areas.

The rent charged by the Administration is calculated by square footage of commercial storage space. The rationale given by the Administration for charging rent is to help pay for maintenance and up-keep. This amounts to approximately \$3,000 annually.

It is not unlikely that the students would like to know what office space is involved and its purpose. Many of the "working areas" are familiar to most students by name or function.

The Picaro office houses the student newspaper. It is the most expensive simply because it is the largest. The Student Union Office of last year now houses the Student Store area, Internal Publicity, External Affairs and the Travel Department. Through the travel department, also new, the Union hopes to be able to arrange inexpensive trips and travel reductions to students, to help inexperienced travellers make arrangements, reservations etc.

The Student Union office also serves a triple purpose, it provides working space for the Union itself, the Treasurer and the Union Secretary.

The fourth room is the Student Union President's office, located opposite the Picaro Office. The fifth room houses the Student Union book depository.

Until last year (1971-72) the Union also paid rent for the use of Rosaria Common Lounge. This rent consisted of the rather significant sum of \$975 (or half of the maintenance costs of 1950).

The Administration reserved the right to close the Lounge to students at any time, to bring in outside groups. The Union objected to renting the Lounge on this basis. The Union expressed the opinion that it was the right of students to have lounge facilities; faculty are provided with lounges and students have the same right. Also the rent for the Common Lounge, the rent the Union had to pay was too high in relation to the use it received (only 17-20 students used it on a regular basis). When the Union refused to pay rent for the Common Lounge, the Administration conceded the right for students to use it without charge.

The Student Union objected to paying rent for space in its own University primarily on the grounds that due to the limited size of the Union, its budget was too small for such expenditure.

This fall the Union approached the Administration to allow the money formerly paid out in rent to be re-channelled into the SIAC fund. The request was granted this semester. Henceforth, the "rent" (\$3,000) will go into the SIAC fund, and thus back to the students.

This situation, while still constituting an initial drain of Union funds, will work out for the general advantage of the Union and the Students, since the Student Initiated Athletic Complex will belong to the students and not the Administration. The Complex will house athletic and recreational facilities plus all Student Union Offices.

STUDENT STORE



ROSARIA HALL

MON. - FRI.

11 - 6

SATURDAY

11 - 2:30

SENATE VOTES YES

by Robert Fiander

The Rosaria Hall Board Room on Nov. 20, was the scene of the second Senate meeting of this month, with Sister Catharine Wallace serving as the chairman to twenty-one voting members. At the meeting, the issue of highest priority arose as the principle of tenure, an issue dealing with the duration of faculty members as instructors at a university.

The opening motion at the meeting dealt with the approval, in principle, of tenure. The discussion that followed in this regard introduced a number of viewpoints. One of the firmer presentations of opinion was displayed by Dr. Wainwright, who supported tenure with the assertion that it was an important safeguard of academic freedom.

Other points which were offered in the discussion included the possibility of the existence of tenure giving rise to inefficiency or "deadwood" in any given department as a result of the high degree of job security which is supposedly a characteristic of tenure. The counter-suggestion to this idea was given as the fact that many of the hardest faculty workers are those who receive the security of tenure. Also mentioned was the position of those teachers on the professional areas at MSVU regarding tenure status. An argument was proposed to the effect that teachers of professional subjects such as typing, should not be able to lay claim to tenure, and that any professor who offered ideas in his classes which are not in strict accordance with the given official subject he teaches, is not behaving responsibly regarding his position as a professor. This idea was distinctly opposed by Dr. Broomfield of the English department.

An interesting comment was offered in the realm of the concept of justice, as explicated by Dr. Payer. His idea stated that the discussion of tenure as it was carried on by the senate meeting, was not wholly indicative of the presence of an ideal or perhaps moral format in this regard.

Sister Catharine Wallace indicated that tenure's definition includes, along with secure employment, the possibility of dismissal where there is a just cause.

In reference to a comment on hiring practices, she also observed that a certain responsibility must be taken on the part of any applicant for a faculty position. A motion introduced to bring an end to the discussion, was passed and followed by the approval in principle of tenure by the senate, with one abstention and



Mount Saint Vincent University senate members.

none opposed.

The introduction of the third motion saw the discussion of a method for senate procedure in tenure discussion as suggested by Mr. Joe Foy and Dr. Broomfield in a letter of October 26, 1972. Mr. Foy suggested that change was necessary in regard to the senate approach to tenure, and that those without tenure are in much the same position as they were prior to senate discussion. Mr. Foy also emphasized that there had been considerable discussion regarding tenure since the fall of 1970.

Sister Catherine Wallace's reaction was a re-affirmation that regular senate procedure should be retained. Towards the end of the meeting it was felt that the exact implications of tenure and a definition of tenure itself should be given. This was dealt with by referring the idea to a carpet motion, which acknowledged that a report in this regard on tenure was to be submitted to the senate on April 13, 1973

Sister Catharine Wallace ended with the observation that the senate meeting had contributed to a greater awareness of the situation of tenure.

HOME EC CORNER

by Janet McCabe

The Home Economics Club recently met to try and let everyone know what is being planned until mid-January. The Craft-and-Bake Sale will be taking place on November 29 and 30 from 11:30 am to 1:30 pm, outside of Rosaria cafeteria. This is a good chance for some sneaky Christmas shopping, as the sale will include baked goods along with crocheted and knitted crafts and numerous other items.

There is also a Brewery Tour being planned for sometime during the week of January 18. This will only involve, however, the Home Ec seniors.

As of yet, there are no junior, or sophomore representatives for the Home Ec club. As a matter of fact, no one was even nominated for the Home Ec representative on Student Council. Apathy must run really strongly in this department or else the Student Council just doesn't seem to mean much to the Home Ec students. Our department is one of the most active on campus and yet, we haven't even that much of a say in the student council. To me, this seems ridiculous and completely unnecessary.

Anyone willing to help in any way with work on the Home Ec section of the yearbook, can get more in-

formation by checking with the Yearbook committee in Seton.

There will be no further Home Ec club meetings until after Christmas; and then notices will be posted.

CHAPEL SERVICES

Chapel Services-December

Sunday Evening Prayer:
Every Sunday at 7:00 p.m.

Sunday Eucharists:
Dec. 9:30 - Gerry Morris
11:00 - Don Shipton
Dec. 9:30 - Don Shipton
11:00 - Dan Meunier

Weekly Eucharists:
Monday-5:00 - Dan Meunier
Tuesday-12:05 - "
Wednesday-5:00 - "
Thursday-(residence) "
Friday-5:00 "

Saturday Eucharists:
7:00 - Dan Meunier

SCHOLARSHIP MEETING HELD

by Paul Brinton

On Monday November 20, 1972 at 4:00 pm, an open meeting of the Admissions and Scholarships Committee was held in SAC auditorium. The purpose of this meeting was to inform the university community of the policies of this committee. Approximately twenty interested people attended, many of whom were faculty.

The scholarship policies of the Admissions and Scholarships Committee are basically straight forward. All MSVU students (male and female) are eligible for

scholarships if they meet the academic requirements. New students are required to maintain an average of 80% and returning students an average of 75%. A student's average is the average of the five highest marks achieved. Eligible students must also have a complete pass record.

In 1971-72, new students received a total of \$21,000. A \$1000.00 scholarship was awarded for outstanding merit. The remainder of the \$21,000 is awarded to the remaining eligible applicants according to grade standing. Returning students in 1971-72 received a total

of \$35,000.

Until 1971, the Admissions and Scholarship Committee offered bursaries to students applying for financial assistance. These bursaries have now been discontinued as the committee experienced difficulties in determining who was justly deserving of financial aid. A system of work bursaries is now employed. Students applying for bursaries are now given paid employment on campus. Last year 140 students benefited from this program. Special assistance is offered to black and overseas students.

COURSE EVALUATION

Course evaluation should include every facet of the university

The Student Union study on course evaluation, headed by Lois Hartnett, has concluded that course evaluation should not concern students only. Therefore several faculty members have been asked to assist the Union plan in a fair evaluation programme.

The committee has decided to confirm this year's evaluation to the faculty of arts. One reason given for this move is that it would take too much work to cover the whole campus. Secondly, since most students take at least one Arts course, it is hoped that the majority of students will be reached in this way.

The committee will hold its first public meeting during the last

week of classes in December. It is hoped that students and faculty alike will attend the meeting and express their opinions.

An attempt is being made to avoid the use of course evaluation as an outlet for negative criticism only. Professors will be able to evaluate each of his or her classes. The committee feels that students have responsibilities too, which they do not always live up to. Course evaluation should be constructive and useful to both students and faculty.

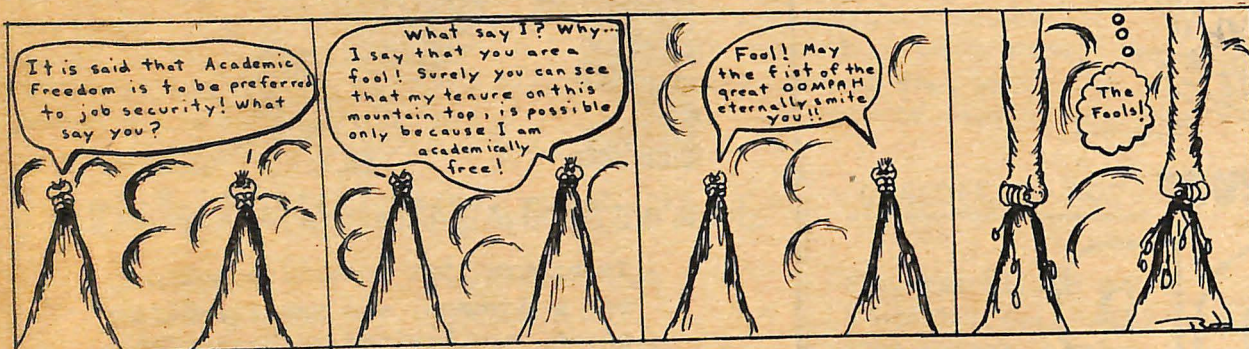
Attendance is invited but if you cannot make the meeting, you are asked to write your opinions down and address them to Lois Hartnett at the Student Union of office. Your help is needed to make course evaluation useful and meaningful.

After presentation of these policies an open discussion was held. Several complaints and suggestions were raised.

It was noted by several people on the floor that a contradiction existed concerning the awarding of scholarships. The committee was requested to clarify whether scholarships are awarded to attract a higher standard of student or to financially assist eligible students. It was suggested that financial situations should be considered as a key factor in the awarding of scholarships. It was also suggested that scholarships be given through faculties since standards of merit differ between faculties.

The committee was asked to consider offering special assistance to local, financially deprived students.

The Admissions and Scholarships committee recorded the various comments offered by those in attendance but no definite answers were forthcoming.



WE CAN HELP MAKE IT HAPPEN

Why not let us prove it to you? You can open an account, apply for a Canada Student Loan, or get advice or information on any of the financial services we offer to students. Drop in soon to your nearest Royal Bank branch — they will be pleased to help you.



ROYAL BANK
serving Nova Scotia

INFO



The English Department this year has opened its meetings to two students. These students were chosen from those representatives who volunteered. Every Thursday at 1:00 there is a meeting of class representatives which is open to all interested English students. As well a list of class representatives is on the English Bulletin Board 5th floor SAC.

This year an English Society has been formed. On Monday Nov. 20 it was given a charter by the Student Council. This society proposes to conduct workshops, student-faculty get togethers and other activities beneficial to the English major or minor. Society meetings are held Thursday's at 2:00. Interested students unable to attend should contact Lois Bryson, Assisi Hall.

On Dec. 6 at 8:30 in SAC auditorium B & C the English Society are presenting the film "Catch 22". Admission: 75¢.

PEOPLE HELPING PEOPLE

by Daniel Meunier

Just a few words about the Social Rehabilitation Center. This Center situated at 5739 Inglis St, has a twofold purpose. First, to help the reintegration of patients of the Nova Scotia Hospital into the community by introducing them to different facets of its every day life. Twice a week, for a short duration, patients about to be released from the hospital are invited to participate in a learning experience with competent assistants (house skills, family planning, how and where to spend a dollar, drugs existing agencies etc.) they are then taken for a visit to various organizations in the community. Secondly, the Rehabilitation Center provides a drop-in service for these people once they are on their own. It organizes different recreative activities where the opportunity is given to meet other persons (dance, special food nights, group visits or simply using the facilities of the Center with others.

Presently some of the students are participating in a one night a week volunteer service. We are sort of feeling our way by making ourselves available to people at the Centre while taking part in the Thursday night activities. Our goal is twofold: get to know the people and the Center and prepare ourselves to assume responsibility of a time-slot of our own in the program when January comes along, We were

thinking of organizing activities for Sunday afternoons (bowling, swimming, group singing, visits etc.) Money to fund a reasonable program is available, just the people power is short at this time. Most of the people who attend the Centre are on a very tight budget, cannot afford many of the things we take for granted and Sunday afternoon is a long haul for someone who is alone. Maybe we can do something about that situation.

Meanwhile, if you care to fine

out more about the place, the people and what it entails, meet us on Thursday night at 7:00 pm in the front entrance of Assisi, or drop in at Monay, (Chaplaincy House) for more information. Your contribution would be greatly appreciated by the people at the Center and by the few persons here on campus trying to get this thing to work.

The place: Social Rehabilitation Center

5739 Inglis Street

The time: Thursday, 7:30-10 pm

CAMPUS POLICE FOR MSVU

The Executive Council of MSVU Student Union is now in the process of setting up an organization of Campus Police. An attempt to set up a similar organization last year was briefly successful. It is hoped that each year, the structure of Campus Police will be more encompassing and responsive to the needs of the campus.

The concept of MSVU Campus Police would appear to be basically sound. In addition to providing Mount students with an added source of revenue, this organization would also silence complaints voiced frequently in the past about the use of Dal Campus Police at Mount Student Union functions. Many students have indicated that while they object to Dal people asking them to cool it at beer bashes, etc., Mount Campus Police perform-

ing in the same function would be viewed in a kinder light. The money now being paid to Dal Student Union for the use of their Campus Police would also be better spent if Mount students were to benefit directly from the expenditure.

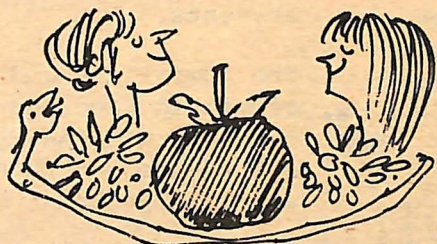
Ms. Julie Coolen, External VP of Student Council is responsible for the actual organizing of Campus Police. She reports that to date she has received approximately 30 applications. Many of the applications have been examined and applicants should be receiving notifications of success or failure in the near future. Ms. Coolen says "student response for the Campus Police positions has been good".



Ms. Julie Coolen, External V.P.

To ensure that potential police men and women, who are inexperienced, are trained to deal effectively with the varied situations, they will be required to handle a system which pairs trainees with an experienced Campus Cop.

It is to be hoped that Mount Campus Police will be employed at the upcoming Arts Weekend.



Did you ever

STOP

to think how it all got started?

Get some straight facts about the different methods of birth control and some historical anecdotes in the FREE "How-Not-To" booklet. Written in simple, easy-to-read language. From Julius Schmid, makers of quality contraceptives for men.

Ask for these well known brands at your drug store.

FOUREX • RAMSES • SHEIK



JULIUS SCHMID OF CANADA LIMITED
32 Bermondsey Rd., Toronto 16, Ont.

Please send me FREE THE-HOW-NOT-TO-BOOK
(Print clearly)

TO: Name _____

Address _____

City _____ Zone _____ Prov. _____

YS-272

THE
HOW-NOT-TO
BOOK
Julius Schmid's guide
to modern birth control methods



EXPORT "A"

CANADA'S FINEST CIGARETTE

THEATRE THEATRE THEATRE

THE COLOR OF DUST

by Ann Fothergill

To open their 1972-73 season, Neptune Theatre is presenting a Newfoundland historical reverie entitled *Colour The Flesh The Colour of Dust* by Michael Colk. This is the professional premiere of the play.

After a week's grace in which to reflect, I still can't describe a plot line-to tell you the truth, there really isn't one. Instead one sees a series of vignettes capturing the atmosphere of Saint John's between the spring and fall of 1762. The ragged and undisciplined British garrison that has been holding the town for the last twenty years in boredom sees the coming of a French attack as a blessing and immediately surrenders. The townspeople eye every event cynically, because for those who continue to exist, the drink, the starvation and the prostitution remain, along with the occasional sport of murdering a British soldier. The merchant adds sawdust to the flour he sells, learns French when the need arises and eventually hauls out his British flags to make a profit on the recapturing of the city. A girl and a British lieutenant turn in mutual loneliness to each other, but the union is fated. And still life goes on.

Painted in somber tones of grey and brown with flashes of colour in the uniforms, the show could seriously depress one, were it not for some of the excellent character creation. Most notable are Dean Harris as Willie and Rowland Davies as Captain Gross. The first presents a human and touching,

though short-lived, picture of a soldier sacrificed to the town's people's lust for blood. The second is sacrificed, but in a totally different way-to madness. Gross's final insights into the futility of life in Saint John's are the finest reflections in the script. Diane D'Aquila renders a very good Marie, with strength and softness and depth, despite some incoherent soliloquies. Ian Deakin as the merchant's boy is saucy, with a native wit and numble disposition, a very enjoyable character.

Eric House was a little disappointing as Merchant Tupper, seeming a little too lovable a cheat to suit the tone of the rest of the play. David Renton has finally decided to act. His crafty Magistrate Neal is well-conceived, not stiff, and one of the better characterizations I've seen him do in the last three years.

Consistency and coherence is lacking, primarily in some of the scenes with the townspeople, and some of the soliloquies. Using render. The townspeople eye every chorus is very effective, but might have been less disorientating had they been consistent in either interacting for effect or talking directly to the audience. Using both at odd intervals was distracting. As for soliloquies, if anyone can explain to me the the significance of Marie's "Indian in his canoe", retain the speech; otherwise, throw it out. It does nothing for her character and leads nowhere in the action.

One other point is accent. I don't pretend to be an expert on accents, but if they are to be used, they must be used by everyone

all the time. Nothing is worse than one blatantly non-accented voice in a forest of brogues, or an accent dropped for two lines and then picked up again.

On the whole, the production is polished and fluid. You are living a dream thanks to a combination of lighting (Rae Ackerman), scrim and cyclorama (Robert Doyle) which impress ideas of billowing and receding fog throughout the show.

If you're a history buff who likes to live the times, *Colour The Flesh The Colour of Dust* is yours. I would not hesitate to recommend it to non-history lovers too. It's Canadian, it's well done, and although it could use a spot of rewriting, it's an experience not to be missed.



UNDER THE SYCAMORE TREE

by Angie Turple

The Mount Drama Society production of *Under the Sycamore Tree* is a delightfully funny satire on the nature of man. A colony of ants decides to become human. Their success exposes man as the confused being he is.

Bob Byers, the Boy Ant was terrific; Cathy Stevens, Girl Ant, played her role with feeling. The Scientist, Jim Archibald remained scientific while his Queen, Ann Fothergill developed from an egotistical monarch to a jealous wife to a middle-aged lady.

The loyal opposition, the Chief Statistician, Sheelan Gormiley and the General, Ken Eccles, kept things lively and confused. Add Brown Ant, Lyndita Stansbury, chaos, war and you have great theatre.

The Drama Society did a fine job on an enjoyable script. As one of the cast put it, "It was fun to make people laugh for a change!"

The Paulists are helping to build the earth.

downtown
on the campus
in the parish
in the office
building bridges
working with
the young and old
spreading the
Christian spirit,
praying
celebrating
counseling

North American
priests on the
move throughout
Canada and
the United States.

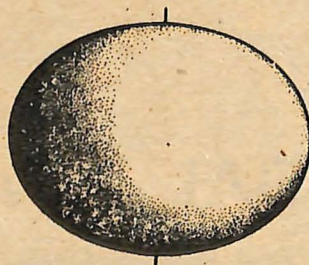
For more information write:
Father Donald C. Campbell,
Room 101CA.

Paulist Fathers.
647 Markham Street
Toronto 174, Ontario

CLASSIFIED ADS

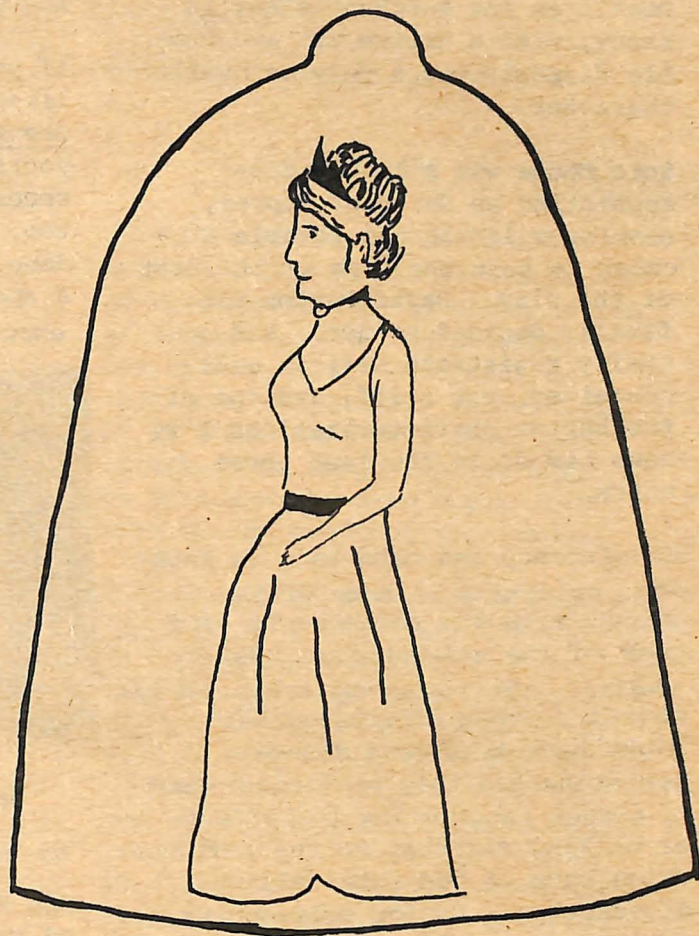
Margaret Miller R-438
Evaristus Hall, will
type papers. Price:
40¢ per page.

Two guys need a drive
from the South end (near
South Park) to MSVU Mon.
to Fri. to be at MSVU by
9:00. Phone: 422-6883
after 5:00.



MSVU

ARTS WEEKEND



**BELLE PUB
EVARISTUS GYM**

DEC 1

8pm

WITH MOOD

Adm 1.50

**BELLE OF
THE BALL
ROSARIA HALL**

DEC.2,

9pm

WITH SHANGO

Adm \$5

FORMAL

**BELLE
COFFEE HOUSE
ROSARIA HALL**

DEC 3

8pm

**WITH PEGASUS
MOUNT TALENT**

Adm \$1

TICKETS AT DAL INQUIRY DESK

SAC